

ABOUT US

TECHNICAL DEVELOPMENT

CORPORATION is an engineering and manufacturing firm founded in 1978.

We are located in Concord, North Carolina in the United States. TDC's manufacturing machinery and equipment has been sold to plants across the globe in North and South America, Europe, Asia and Australia.

CAPABILITIES

- We now have a 100,000 sq feet manufacturing facility.
- 50+ employees
- Solidworks 3D Design
- UL Certified electrical panel shop
- Allen Bradley, Yaskawa, and Siemens programming
- Full CNC Machine Shop for expedited deliveries
- Welding Fabrication shop
- Powder Coating



WHERE MADE-TO-ORDER IS OUR SPECIALTY



CHALKMASTER

TECHNICAL DEVELOPMENT CORPORATION



TECHNICAL DEVELOPMENT CORPORATION

980 DERITA RD SUITE B, CONCORD, NC 28027 • 704-875-1198

WWW.TECHNICALDEVELOPMENT.COM • EMAIL: INFO@TECHNICALDEVELOPMENT.COM

The **CHALKMASTER** is a machine that provides an efficient and economical high speed method of covering insulated cables with fine powdered talc, prior to the final extrusion process.

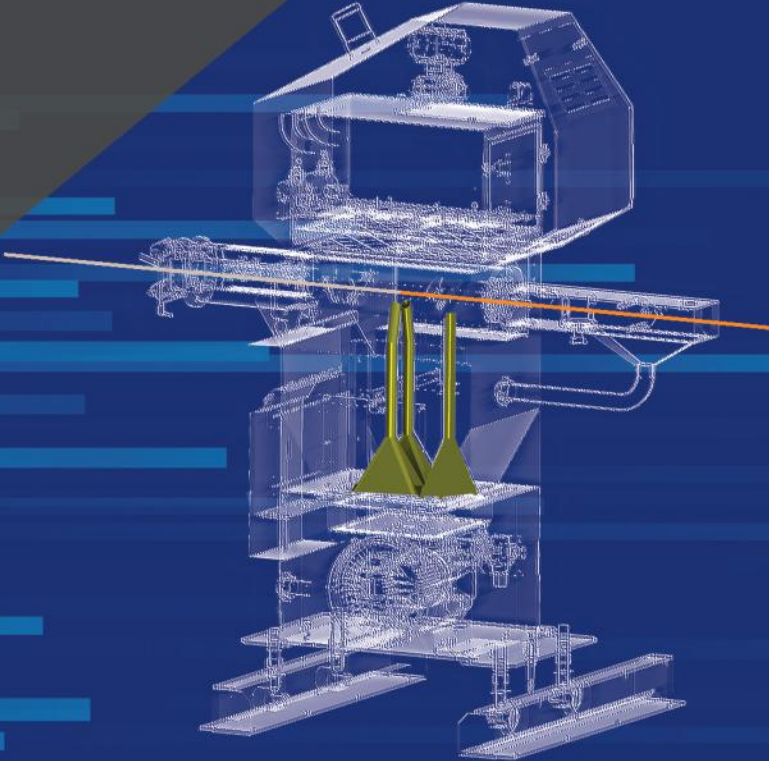
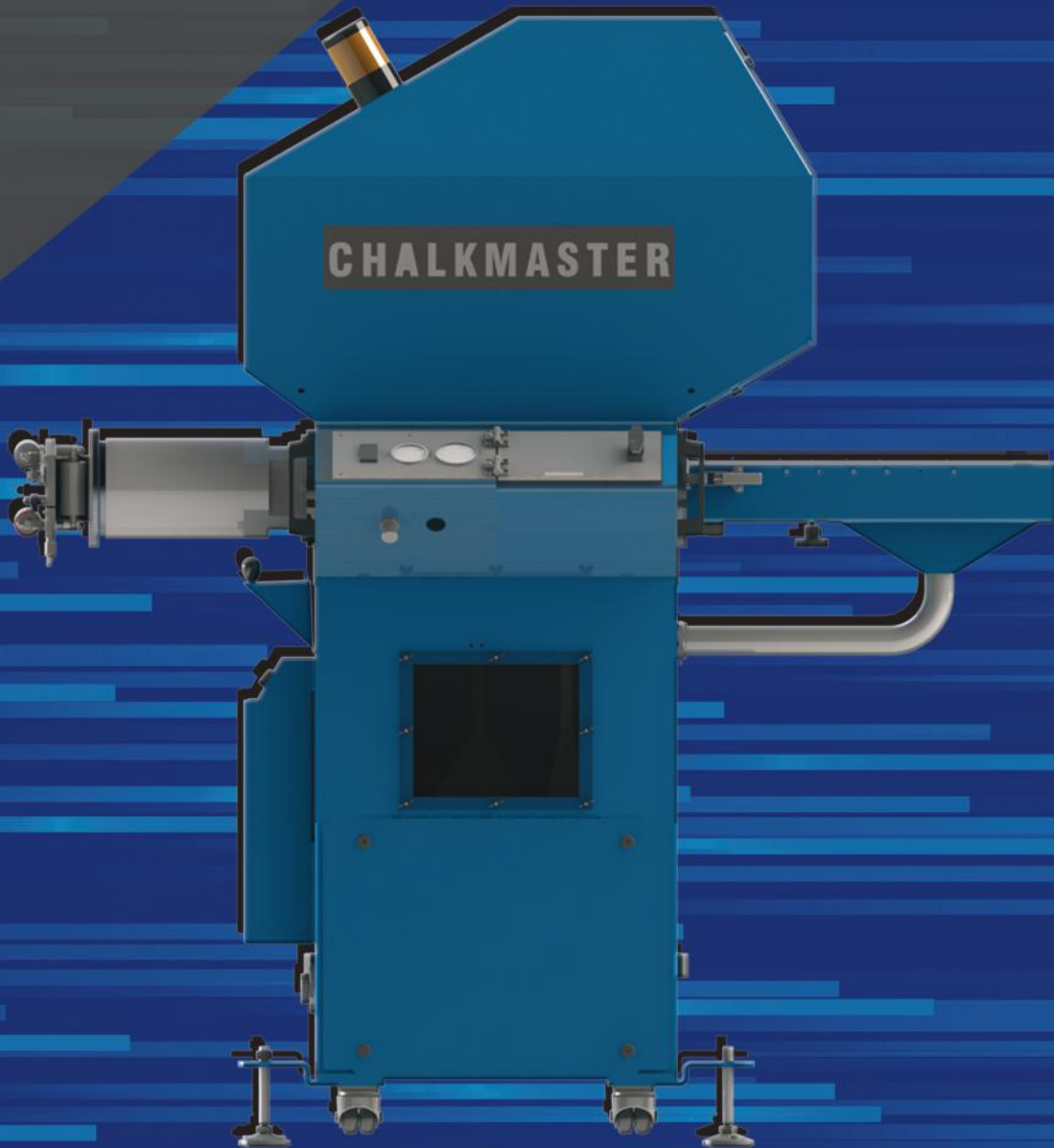
The system is also suitable for other continuous processes, where products require the controlled application of powdered materials - ie. hoses, tubes and profiles.

The basis of the design concept is the creation of an effective fluidised bed of powder, by passing compressed air, via a regulator and filter, through a microporous ceramic base. The fluidised powder is then fed through a twin venturi lift tube and is directed on to the product. Excess powder is removed by a precisely adjustable air-wipe assembly.

The sixth generation **CHALKMASTER** has undergone some unique upgrades to make the talc machine more efficient and easier to maintain.

Upgrades:

- Electrostatic Application System
- Easy to Change Filtration
- Enhanced Air Wipes
- Powder Recirculation
- Enhanced Vacuum

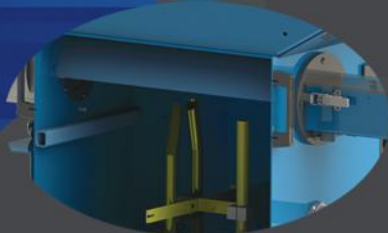


Product Line Height:	1000mm-1100mm 40"-43"
Product Capacity, Max Dia:	75mm 3"
Weight of unit when empty:	335kgs 740lbs
Powder Capacity:	25kgs 55lbs
Electric Supply, Single Phase:	250V 50Hz 220V 60Hz
Compressed Air Supply:	6 Bar Min from 12mm min bore airline

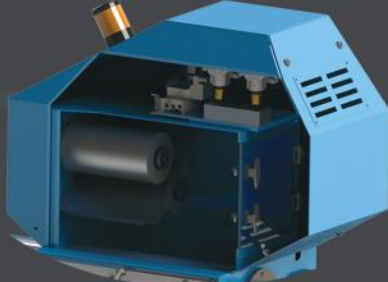
The **CHALKMASTER** has been given a new Electrostatic Application System.



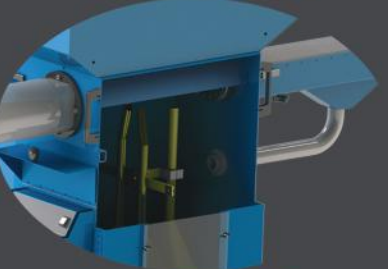
The **CHALKMASTER** has enhanced air wipes to remove all the excess powder.



The **CHALKMASTER** has been updated with a brand new filter. The machine now has a cartridge filter that can be changed in minutes.



On the **CHALKMASTER**, TDC added a powder recirculation system to minimize waste.



The **CHALKMASTER** has been given an enhanced vacuum.

